



## Betty Braverman Award

The Betty Braverman Award, established in 2025, is a prize of \$1,500 each year to a deserving junior or senior undergraduate student within the School of Art, Art History, and Design at the University of Iowa. The award will alternate annually between the areas of Drawing and Painting.

### Eligibility

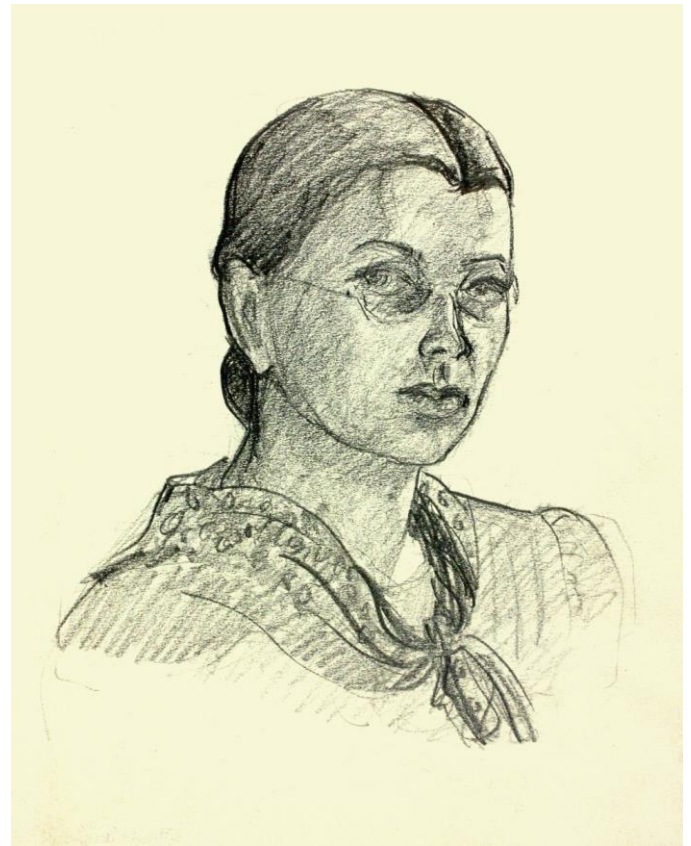
Eligible works should reflect a strong engagement with material processes and observation, in media including but not limited to oil, acrylic, watercolor, graphite, charcoal, pastel, and other hand-applied media on paper, canvas, or similar surfaces. Digital painting, software drawing applications, and computer-generated imagery are not eligible. Full guidelines are available from the School of Art, Art History, and Design.

## Honoring a Legacy of Artistic Excellence

Betty Braverman (later Betty Wolf) was a gifted artist from Iowa City who studied fine arts at the University of Iowa from 1934 to 1938. She continued her studies in art and design in New York and Dayton, married, and became a devoted wife and mother of three. Her life and artistic career were tragically cut short by complications from polio in 1955 at the age of 39. Much of her art was stored away for many years and is now being curated, digitally archived, and made accessible to all by her son, Daniel Wolf, who developed this award with the University of Iowa Center for Advancement to re-establish her presence here and inspire others on a similar path. Betty's work in pastel, pencil, oil, tempera, watercolor, and ink continues to shine.

Betty Braverman began studying art as a child, and some of her works predate her time at the university. She was valedictorian of the City High class of 1934. At the University, she served as the society editor of the *Daily Iowan* newspaper, contributed to WSUI radio, was inducted into the Sigma Delta Tau sorority and Phi Beta Kappa, and graduated summa cum laude in 1938.

Grant Wood, one of the most renowned American artists of the 20th century, joined the University of Iowa's art faculty in 1934—the year Betty enrolled as a first-year student. Her development as a mature artist necessarily embodies the influence Wood had on the painting and other art classes she took.



Her work reflects her love of nature and the human figure, often blending emotional depth with technical precision. The Betty Braverman Award directly links her real experience as an art student at the University of Iowa in the 1930s with another student sharing that same experience today.

Front Images:

*Woman Wearing a Hat* (oil on board) &  
*Man with Cap* (oil on board)

Back Image:

*Self Portrait* (pencil on paper, ca. 1933)

Photograph of Betty Braverman.

Art works by Betty Braverman  
(American 1917-1955)

Images courtesy of Daniel Wolf.  
All rights reserved.



## Supporting the Betty Braverman Award

To support the Betty Braverman Award, please include instructions to direct your gift to the following fund:

**Betty Braverman Award (Fund Number: 30160112)**

Please make your check payable to:

**University of Iowa Center for Advancement**

P.O. Box 4550

Iowa City, IA 52244-4550

The University of Iowa prohibits discrimination in employment, educational programs, and activities on the basis of race, creed, color, religion, national origin, age, sex, pregnancy, disability, genetic information, status as a U.S. veteran, service in the U.S. military, sexual orientation, gender identity, associational preferences, or any other classification that deprives the person of consideration as an individual. The university also affirms its commitment to providing equal opportunities and equal access to university facilities. For additional information on nondiscrimination policies, contact the Director, Office of Institutional Equity, the University of Iowa, 202 Jessup Hall, Iowa City, IA 52242-1316, 319-335-0705, [oiw-ii@uiowa.edu](mailto:oiw-ii@uiowa.edu).

**IOWA**  
College of Liberal Arts  
and Sciences